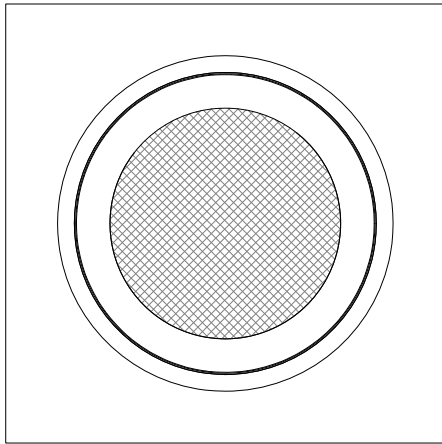


BIO CLEAN SCREENING FILTER

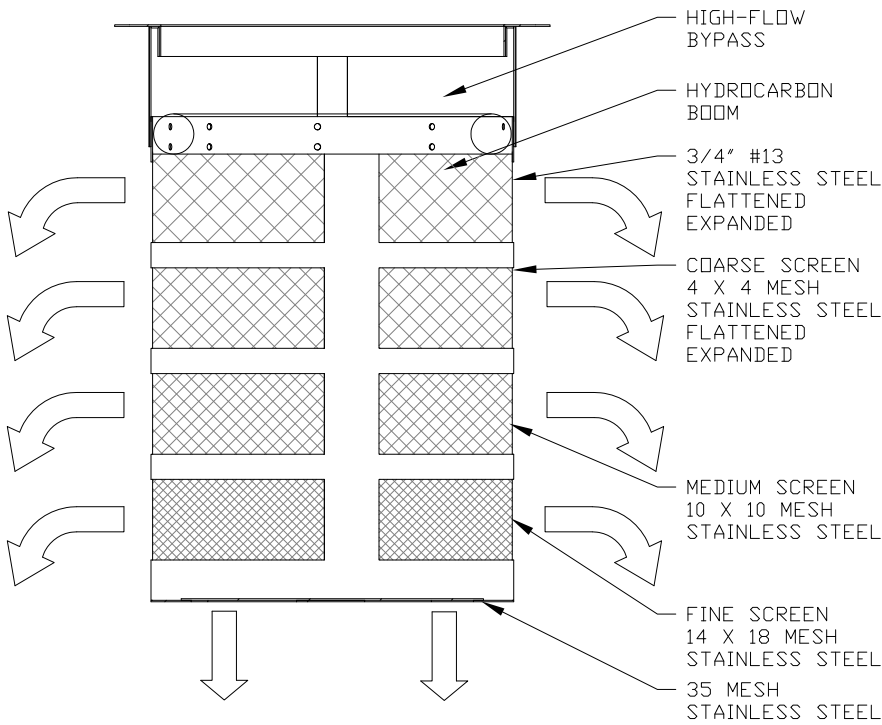
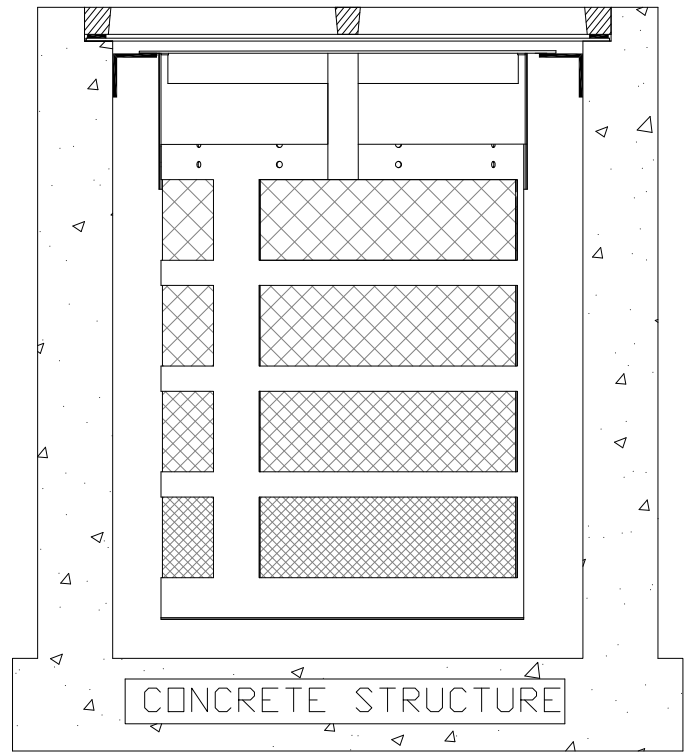
FOR USE IN GRATE INLETS



TOP VIEW

NOTES:

1. ALL HARDWARE, FLANGE, FRAME, SCREENS SHALL BE STAINLESS STEEL
2. HYDROCARBON BOOM SHALL BE 2" DIAMETER AND CONNECTED, MECHANICALLY TO THE FILTER FRAME WITH RAILS ALLOWING IT TO FLOAT ON THE WATER SURFACE REGARDLESS OF HEIGHT
3. SEE PERFORMANCE REPORTS IN MANUFACTURES SPECIFICATIONS
4. OTHER STANDARD AND CUSTOM MODEL SIZES AVAILABLE - CONTACT BIO CLEAN FOR MORE INFORMATION.
5. BASED ON 37% OPEN AREA.
6. CONSIDERS A SAFETY FACTOR OF 2.0.
7. CONSIDERS A LOCAL DEPRESSION PONDING DEPTH OF 6 INCHES.
8. STORAGE CAPACITY BASED ON THE BASKET HALF FULL.



FLOW SCHEMATIC

MODEL #	TREATMENT FLOW (CFS)	BYPASS FLOW (CFS)	SOLIDS STORAGE CAPACITY (CF)
BC-GRATE-MLS 12-12-12	1.19	1.55	0.27
BC-GRATE-MLS 18-18-18	4.32	3.68	1.05
BC-GRATE-MLS 24-24-24	7.67	4.83	2.41
BC-GRATE-MLS 30-30-24	12.97	6.21	3.98
BC-GRATE-MLS 25-38-24	13.53	6.59	4.16
BC-GRATE-MLS 36-36-24	19.64	7.60	5.94
BC-GRATE-MLS 48-48-18	24.84	10.13	7.92

**FLOW RATES CALCULATED USING THE FOLLOWING EQUATION

$$Q = SD * c_d * A \sqrt{2 * g * h} \quad c_d = \text{COEFFICIENT OF DISCHARGE} = .62$$

DRAWING: BIO CLEAN GRATE INLET FILTER DETAILS

TYPICAL MODEL DETAIL

WARRANTY: 5 YEAR MANUFACTURERS

MULTI-LEVEL SCREENING

PROJECT:

BIO CLEAN ENVIRONMENTAL SERVICES, INC.
398 VIA EL CENTRO, OCEANSIDE CA 92058
PHONE: 760-433-7640 FAX: 760-433-3176

REVISIONS: DATE:

REVISIONS: DATE:

REVISIONS: DATE:

REVISIONS: DATE:

DATE: 10/12/17

SCALE: SF = 15

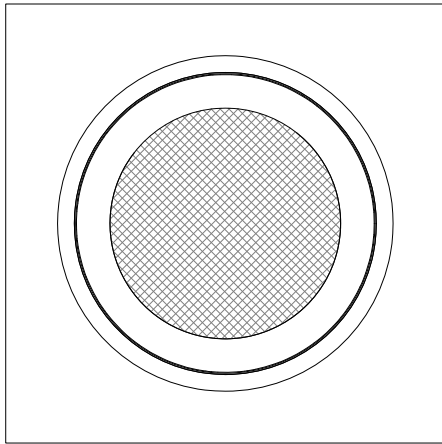
DRAFTER: M.C.P.

UNITS = INCHES

Bio Clean
A Forterra Company

BIO CLEAN SCREENING FILTER

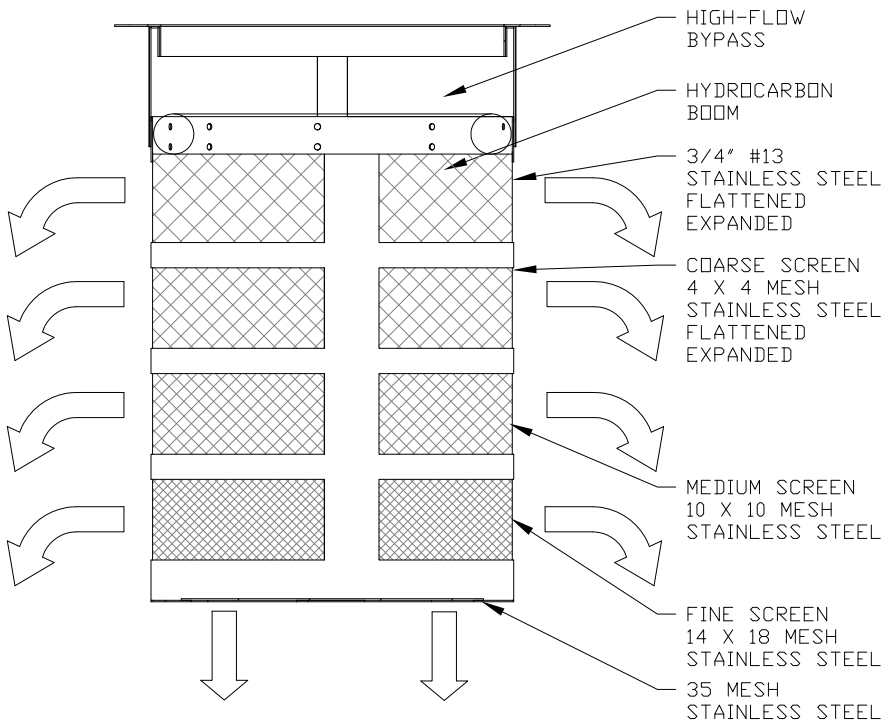
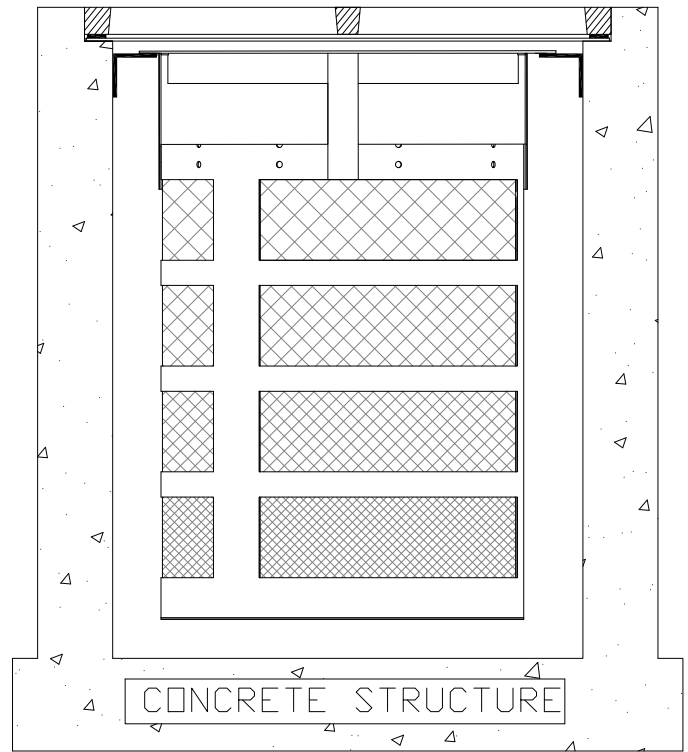
FOR USE IN GRATE INLETS



TOP VIEW

NOTES:

1. ALL HARDWARE, FLANGE, FRAME, SCREENS SHALL BE STAINLESS STEEL
2. HYDROCARBON BOOM SHALL BE 2" DIAMETER AND CONNECTED, MECHANICALLY TO THE FILTER FRAME WITH RAILS ALLOWING IT TO FLOAT ON THE WATER SURFACE REGARDLESS OF HEIGHT
3. SEE PERFORMANCE REPORTS IN MANUFACTURES SPECIFICATIONS
4. OTHER STANDARD AND CUSTOM MODEL SIZES AVAILABLE - CONTACT BIO CLEAN FOR MORE INFORMATION.
5. BASED ON 37% OPEN AREA.
6. CONSIDERS A SAFETY FACTOR OF 2.0.
7. CONSIDERS A LOCAL DEPRESSION PONDING DEPTH OF 6 INCHES.
8. STORAGE CAPACITY BASED ON THE BASKET HALF FULL.



FLOW SCHEMATIC

MODEL #	TREATMENT FLOW (CFS)	BYPASS FLOW (CFS)	SOLIDS STORAGE CAPACITY (CF)
BC-GRATE-MLS 12-12-12	1.19	1.55	0.27
BC-GRATE-MLS 18-18-18	4.32	3.68	1.05
BC-GRATE-MLS 24-24-24	7.67	4.83	2.41
BC-GRATE-MLS 30-30-24	12.97	6.21	3.98
BC-GRATE-MLS 25-38-24	13.53	6.59	4.16
BC-GRATE-MLS 36-36-24	19.64	7.60	5.94
BC-GRATE-MLS 48-48-18	24.84	10.13	7.92

**FLOW RATES CALCULATED USING THE FOLLOWING EQUATION

$$Q = SD * c_d * A \sqrt{2 * g * h} \quad c_d = \text{COEFFICIENT OF DISCHARGE} = .62$$

DRAWING: BIO CLEAN GRATE INLET FILTER DETAILS

TYPICAL MODEL DETAIL

WARRANTY: 5 YEAR MANUFACTURERS

MULTI-LEVEL SCREENING

PROJECT:

BIO CLEAN ENVIRONMENTAL SERVICES, INC.
398 VIA EL CENTRO, OCEANSIDE CA 92058
PHONE: 760-433-7640 FAX: 760-433-3176

REVISIONS: DATE:

REVISIONS: DATE:

REVISIONS: DATE:

REVISIONS: DATE:

DATE: 10/12/17

SCALE: SF = 15

DRAFTER: M.C.P.

UNITS = INCHES

Bio Clean
A Forterra Company