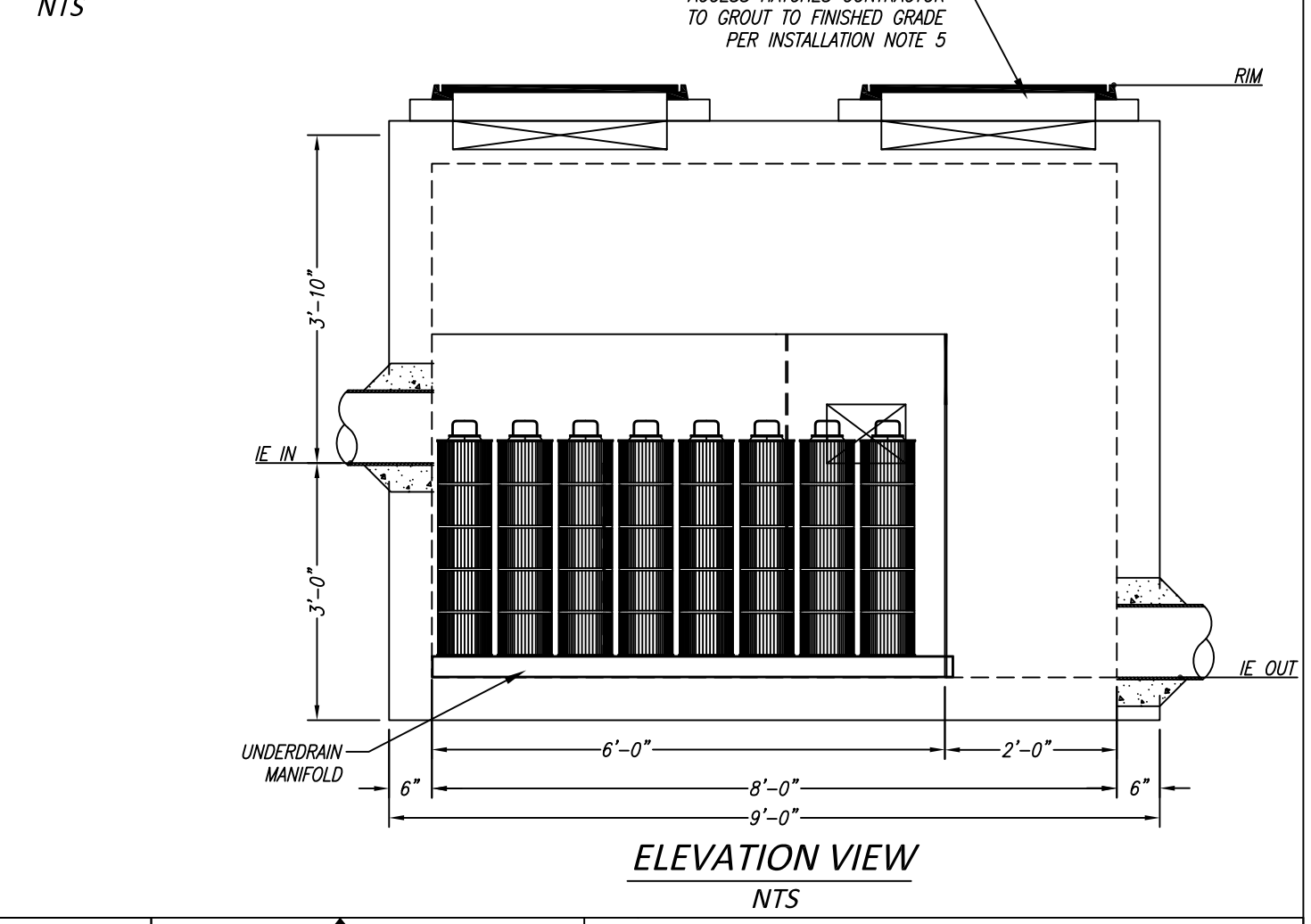
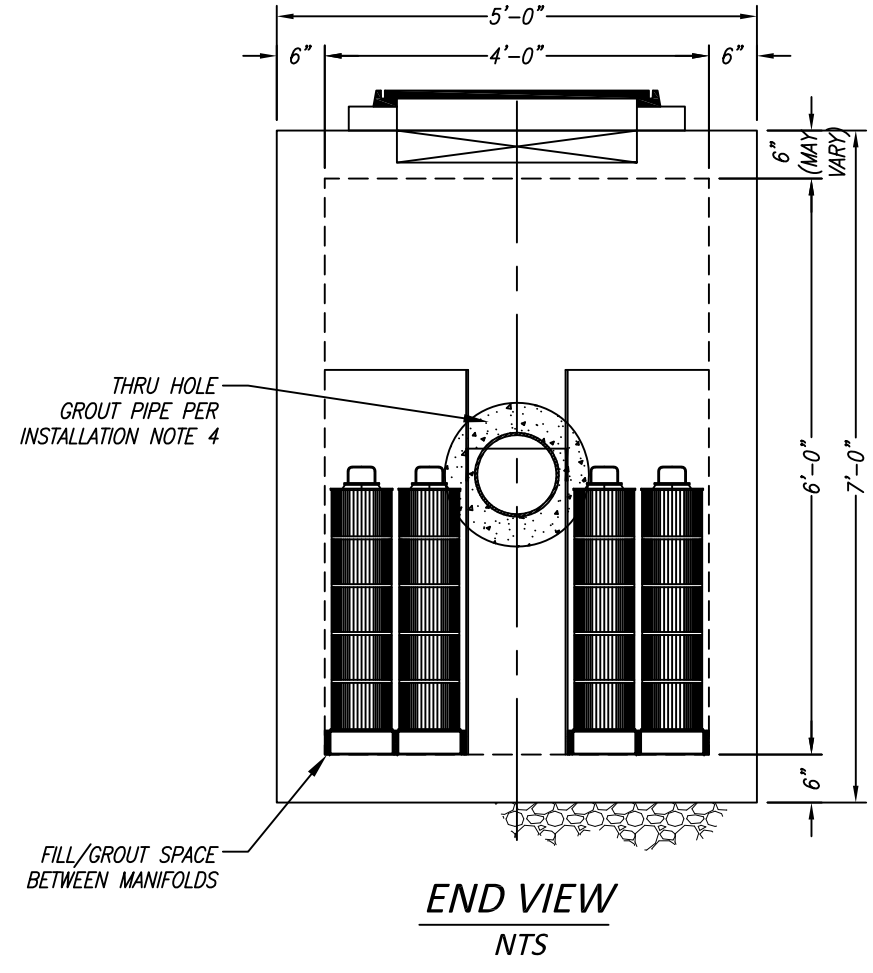
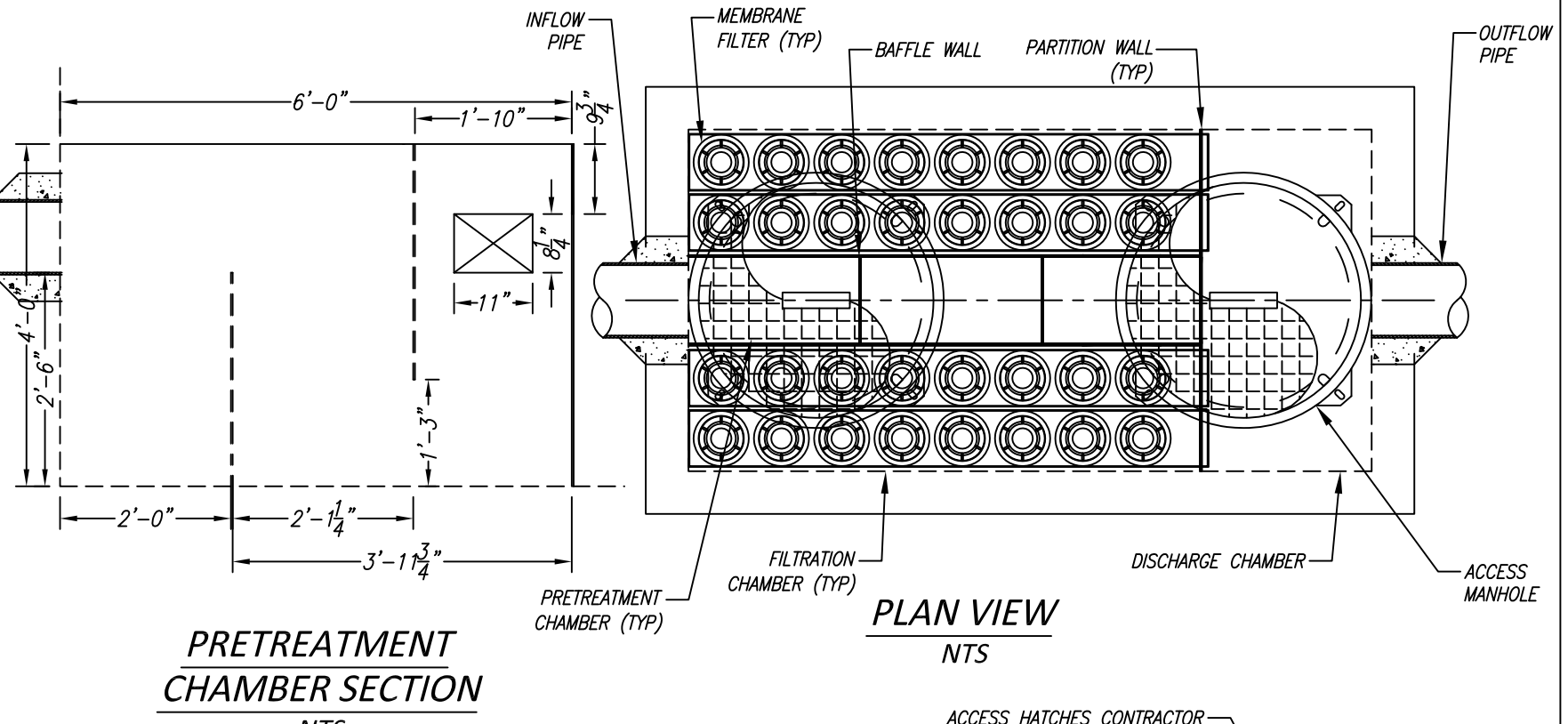


SITE SPECIFIC DATA*				
PROJECT NUMBER				
PROJECT NAME				
PROJECT LOCATION				
STRUCTURE ID		KRAKEN FILTER		
WATER QUALITY FLOW RATE (CFS)				
PEAK FLOW RATE (CFS)				
PEAK STORM DURATION (YEARS)				
PIPE DATA	I.E.	MATERIAL	DIAMETER	
INLET PIPE 1			10"	
OUTLET PIPE 1			10"	
RIM ELEVATION				
SURFACE LOADING REQUIREMENT		HS-20		
FRAME AND COVER		ø30"		
CORROSIVE SOIL CONDITIONS		N/K		
KNOWN GROUNDWATER ELEVATION		N/K		
NOTES:				
*PER ENGINEER OF RECORD				

KF PERFORMANCE DATA				
CARTRIDGE HEIGHT (IN)	30.75			
CARTRIDGE FLOW RATE (GPM)	8.50			
NUMBER OF CARTRIDGES	32			
TOTAL TREATMENT FLOW RATE (CFS)	0.61			
SEDIMENT STORAGE CAPACITY (CF)	6.85			
KF STORAGE CAPACITIES				
SEDIMENT CHAMBER CAPACITY				
	LENGTH (FT)	WIDTH (FT)	HEIGHT (FT)	TOTAL (CF)
CHAMBER 1	2.00	1.02	1.50	3.06
CHAMBER 2	3.98	1.02	0.50	2.03
FILTRATION CHAMBER CAPACITY*				
CHAMBER 1	6.00	1.47	0.25	0.88
CHAMBER 2	6.00	1.47	0.25	0.88
*VOLUME OF FILTERS SUBTRACTED IN STORAGE CAPACITY				

- GENERAL NOTES**
- BIO CLEAN TO PROVIDE ALL MATERIALS UNLESS OTHERWISE NOTED.
 - ALL DIMENSIONS, ELEVATIONS, SPECIFICATIONS, AND CAPACITIES ARE SUBJECT TO CHANGE. FOR PROJECT SPECIFIC DRAWINGS DETAILING EXACT DIMENSIONS, WEIGHTS, AND ACCESSORIES PLEASE CONTACT BIO CLEAN.

- INSTALLATION NOTES**
- CONTRACTOR TO PROVIDE ALL LABOR, EQUIPMENT, MATERIALS, AND INCIDENTALS REQUIRED TO OFFLOAD AND INSTALL THE KF UNIT AND APPURTENANCES IN ACCORDANCE WITH THIS DRAWING AND THE MANUFACTURERS SPECIFICATIONS, UNLESS OTHERWISE STATED IN MANUFACTURERS CONTRACT.
 - MANUFACTURER RECOMMENDS A 6"-12" LEVEL ROCK BASE UNLESS SPECIFIED BY THE PROJECT ENGINEER. CONTRACTOR IS RESPONSIBLE TO VERIFY PROJECT ENGINEERS RECOMMENDED BASE SPECIFICATIONS.
 - ALL PIPES MUST BE FLUSH WITH INSIDE SURFACE OF CONCRETE. (PIPES CANNOT INTRUDE BEYOND FLUSH).
 - ALL GAPS AROUND PIPES SHALL BE SEALED WATER TIGHT WITH A NON-SHRINK GROUT PER MANUFACTURERS STANDARD CONNECTION DETAIL AND SHALL MEET OR EXCEED REGIONAL PIPE CONNECTION STANDARDS.
 - CONTRACTOR RESPONSIBLE FOR INSTALLATION OF ALL RISERS, MANHOLES, AND HATCHES. ALL COVERS SHALL BE SHIPPED LOOSE. CONTRACTOR TO GROUT ALL MANHOLES AND HATCHES TO MATCH FINISHED SURFACE UNLESS SPECIFIED OTHERWISE.



11/13/17SSERTICH

NOT FOR CONSTRUCTION	PROPRIETARY AND CONFIDENTIAL:	Bio Clean A Forterra Company	KF-4-8 MEMBRANE FILTRATION SYSTEM WITH PRETREATMENT STANDARD DETAIL
	THE INFORMATION CONTAINED IN THIS DRAWING IS THE SOLE PROPERTY OF BIO CLEAN ENVIRONMENTAL SERVICES, INC. ANY REPRODUCTION IN PART OR AS A WHOLE WITHOUT THE WRITTEN PERMISSION OF BIO CLEAN ENVIRONMENTAL SERVICES, INC. IS PROHIBITED.		